

Home Modifications

Avoiding Pitfalls
with a Sound Process and Design

By

Mark Ficocelli

Ficocelli Design

www.FicocelliDesign.Weebly.com

Home Modification Pitfalls



What Does a Rehab Tech Do?

A Rehabilitation Technologist can offer a variety of technology services which address disability issues ranging from a basic injury, to a cognitive disability, through severe catastrophic disabilities.

They provide a technical expertise that is founded in addressing the work, home, computer, and independence related issues of individuals with disabilities.

Pitfalls to the Implementation of Home Modifications

- ⊗ Dangerous code violations!!
- ⊗ Hit and run contractors!!
- ⊗ Having to do and pay for the project twice!!
- ⊗ Paying for work that is not functional for the consumer!!

Areas of Service

- ⊃ Office Worksite Modifications
- ⊃ Industrial Worksite Modifications
- ⊃ **Home Modifications**
- ⊃ Ergonomics
- ⊃ Computer Access
- ⊃ Rural Rehab and Farming Environments
- ⊃ Environmental Controls
- ⊃ Aids to Daily Living
- ⊃ Custom Design and Fabrication of Adaptive Equipment
- ⊃ Augmentative and Alternative Communications (AAC)*

Nightmares



Nightmares



Avoiding Those Pitfalls



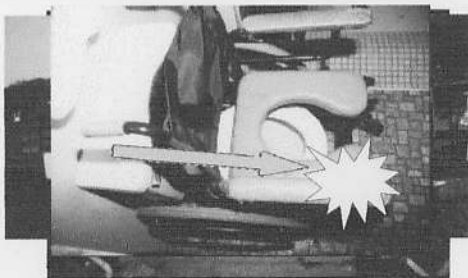
Nightmares



A Thorough, Systematic, Approach to Home Modifications will:

- ⊃ Assist in developing objectives and identifying the necessary modifications
- ⊃ Establish clear expectations for the case manager, counselor, life care planner, consumer, and contractor
- ⊃ Ensure that the bids are comparable and the project is executed properly
- ⊃ Safeguard the funding source and the consumer
- ⊃ Ensure that the consumers needs are met

Nightmares



Getting off on the right foot

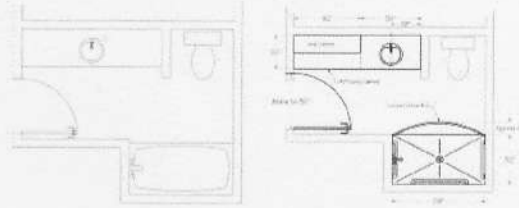
- ⊃ Know how the disability affects accessibility
- ⊃ Know the guiding policies or laws regarding what can be addressed in a home modification
- ⊃ Consider the option of moving
- ⊃ Have a home accessibility evaluation completed by a qualified Rehab Technologist
- ⊃ Attend the evaluation

Contractors: Do they measure up?



- ⇒ One person in charge
- ⇒ Expectations of contractors
- ⇒ Follow-up inspections weed out the bad ones
- ⇒ If something goes wrong, how does the contractor handle it?
- ⇒ Keep a database

Detailed Drawings



The Evaluation Report



- ⇒ The evaluation report should include:
 - How the disability affects accessibility
 - Areas of the home that are inaccessible
 - Adaptive equipment needed
 - Options explored, least cost option and the specifics of the recommendations
 - Inspections needed

Bid Specs



Project Development

- ⇒ Review the recommendations with the consumer
- ⇒ Have the recommended inspections done
- ⇒ Rehab Technologist should create the detailed drawings and specifications
- ⇒ Obtain signed approval from consumer and landlord
- ⇒ Have the Rehab Technologist get 3 bids

Implementation and FollowUp

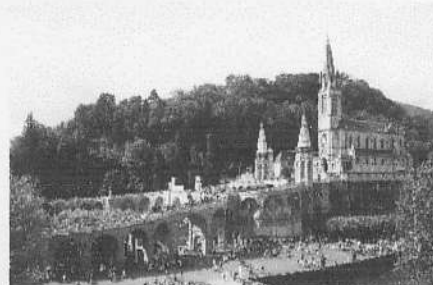
- ⇒ Contract for the work & Inform Rehab Technologist
- ⇒ Rehab Technologist should follow the project along
- ⇒ Have a Follow-Up Inspection done
- ⇒ Contractor should provide a maintenance schedule



Home Accessibility Design



Integral Ramp



Ramp



Switchback Ramp



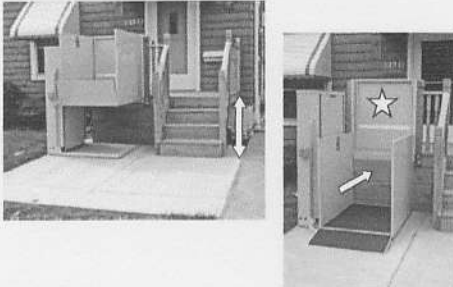
Ramp Basics



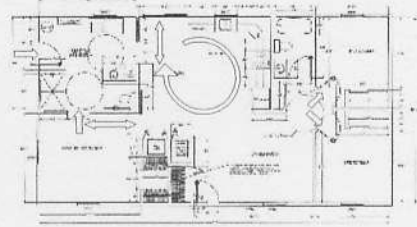
Short Ramps



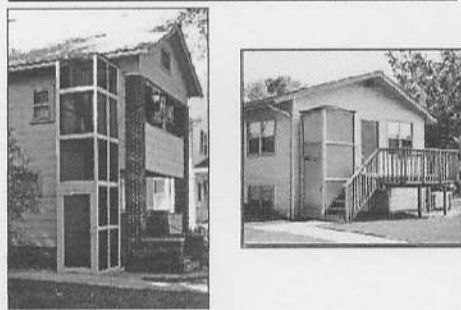
Vertical Wheelchair Lift



Accessible Whole House Plan



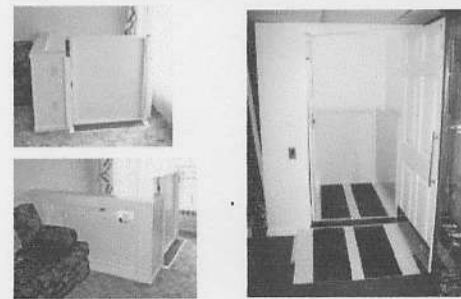
Vertical Wheelchair Lift



Multi-Function Space



Vertical Wheelchair Lift



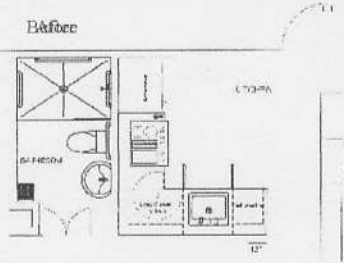
Shared Roll-Through Closets



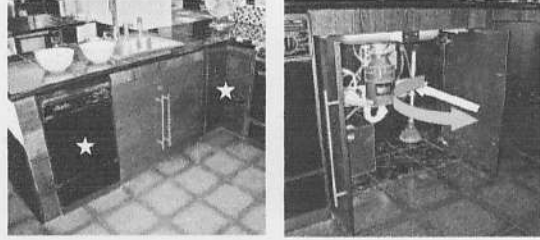
Front Hall Closet

Master Bedroom Closet

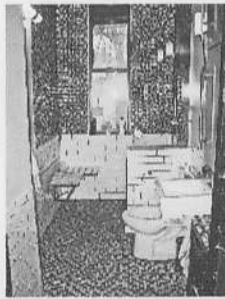
Kitchen & Bath Modification



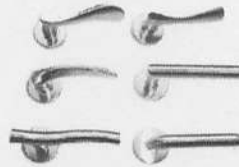
Roll-Under Sink



Accessible Bathroom



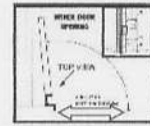
Door Access



Lever Door Handles



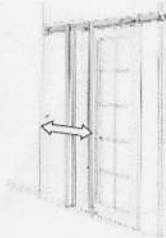
Offset Hinge



Seated Height Controls



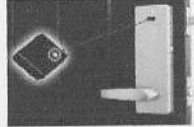
Door Access - Pocket Door



Door Access



Automatic Door Opener

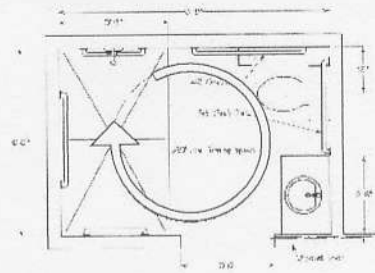


Wireless Deadbolt



Fingerprint Access
Lever Lock

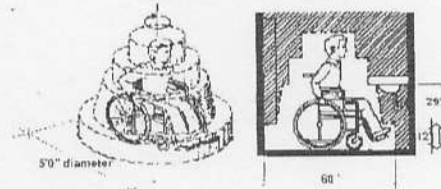
Bathroom Layout



Battery Operated Garage Door Opener



Clear Turning Space



5'0" Diameter Turning Space

Stair Lifts



Bathroom Sink Access



Before



After

Shower & Commode Access



Commode Platform and Roll-In Shower



Fold Up Grab Bars

Bathtub Lift



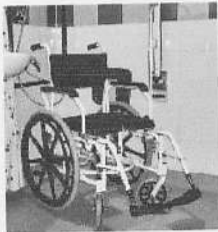
Walk-In Tub



Accessible Kitchen - Before



Shower & Bathtub Access

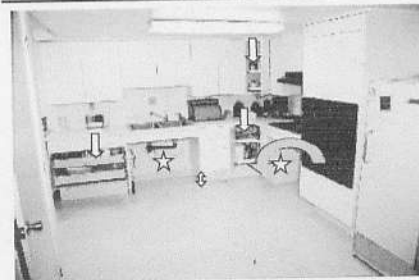


Shower Commode Wheelchair



Transfer Bench

Accessible Kitchen - After



Roll-Under Kitchen Sink

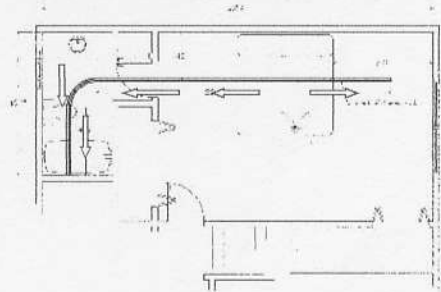


Before



After

Ceiling Track Patient Lift



Laundry Access



Before



After

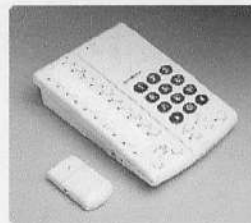
Recreation Access



Patient Lifts



Telephone Access



Hands Free Phone



Photo Phone

Visual Notifications



Phone Ring Amplifier
& Strobe Light



CO2 & Smoke Detector
w/ Strobe Light



Visual Doorbell & Phone
Signaler w/ Bed Vibrator

Home Modifications

Avoiding Pitfalls
with a Sound Process and Design

By

Mark Ficocelli

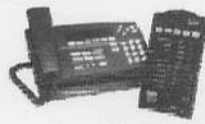
Ficocelli Design

www.FicocelliDesign.Weebly.com

Environmental Control Units



Voice Controlled ECU



Remote
Controlled
ECU



X-10
Modules



PC Based Voice Controlled ECU

Questions

